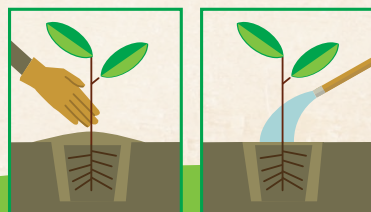
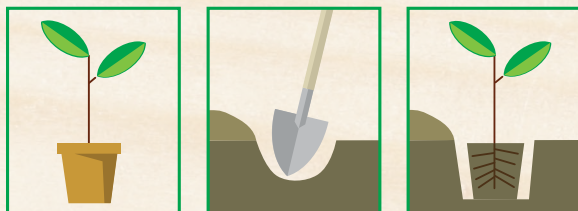


HOW TO PLANT AND CARE FOR YOUR TREE

Here are a few hints to help you plant and care for your tree.

- ✓ Keep your tree in a cool place and do not take it out of its container until you are able to plant it. Restore the Canopy saplings are distributed in MWRD composted biosolids, a sustainable alternative to chemical fertilizers produced by co-composting products of the wastewater treatment process with locally available woodchips.
- ✓ If you received a bare-root sapling (not in a container), plant your sapling within two days for best results.
- ✓ Plant your tree where it will receive full to partial sunlight and in a location where it has room to grow; full grown oak trees range from 50 to 80 feet tall. Do not plant under a power line or too close to any structures.
- ✓ Dig a hole wide enough to let the roots spread out completely and deep enough to cover the roots. The topmost roots should be at ground level.
- ✓ Fill the hole with soil, making sure the tree is straight by pressing around the stem. Water the tree after filling the planting hole until water accumulates on the surface.
- ✓ If you use mulch, keep it away from the trunk.
- ✓ Keeping your tree watered is important during its first year. Keep the soil moist but not soggy. In dry weather, you should water every 7-10 days. Avoid watering so much that you see standing water. No need to water once the ground freezes.
- ✓ Remember to use good gardening hygiene.



Board of Commissioners

Mariyana T. Spyropoulos <i>President</i>	Timothy Bradford
Barbara J. McGowan <i>Vice President</i>	Martin J. Durkan
Frank Avila <i>Chairman of Finance</i>	Josina Morita
	Debra Shore
	Kari K. Steele
	David J. Walsh

David St. Pierre
Executive Director

mwrdd.org

**Metropolitan Water Reclamation
District of Greater Chicago**

Restore the Canopy
PLANT A TREE



*Restore the Canopy is made possible
through a partnership with*



**CHICAGO
REGION
TREES
INITIATIVE**

Our Trees.
Our Communities.
Our Future.

**Planting and
Caring for Your
Free MWRD Tree**

THE MWRD CARES ABOUT TREES

Our **Restore the Canopy** initiative empowers the residents of Cook County with an opportunity to restore our region's depleted tree canopy. The tree population has been decimated by emerald ash borer infestations and extreme weather. Not only do trees provide a beautiful green canopy for our communities, they are a powerful and effective form of green infrastructure. A medium-sized oak tree can help prevent flooding by absorbing 2,800 gallons of rainfall per year.

Trees are vital to our environment for many reasons:

- ✓ Reduce flooding
- ✓ Reduce air pollution
- ✓ Improve health and well being
- ✓ Keep neighborhoods cooler
- ✓ Create a sense of community
- ✓ Lower energy bills
- ✓ Increase property value
- ✓ Provide protection from wind
- ✓ Buffer noise
- ✓ Provide shade
- ✓ Increase habitat for wildlife
- ✓ Absorb carbon dioxide
- ✓ Give oxygen

HOW YOU CAN PARTICIPATE

INDIVIDUALS

Trees will be handed out to residents at Tree Pickup Days at several locations around the county. Check mwrdd.org, Facebook and Twitter to find out when a Tree Pickup Day will occur near you.

COMMUNITY GROUPS AND SCHOOLS

Partnering with schools and other community groups within Cook County allows residents to enjoy the benefits of planting oak saplings right in their own communities for decades to come.

Groups will receive bare-root saplings in bags of 100 or pre-potted saplings in preparation for planting events within your community. Arrangements can be made for saplings to be picked up at MWRD facilities or delivered to your location.

Planting and care instructions, along with additional information regarding the benefits of trees, will be provided and available at mwrdd.org.

If you would like more information or would like to order additional trees:

- ✓ Call MWRD Office of Public Affairs at 312.751.6633
- ✓ Visit our website at mwrdd.org
- ✓ Email public.affairs@mwrdd.org

Restore the Canopy trees are not for resale.

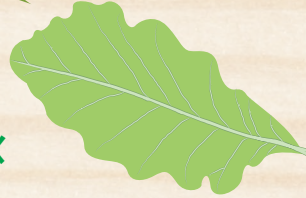
WHAT KIND OF TREES?

The MWRD is distributing five kinds of trees, primarily oaks. All five are native to the area and are powerful forms of green infrastructure that can help prevent flooding by absorbing stormwater.

RED OAK



SWAMP WHITE OAK



PIN OAK



BLACK OAK



PECAN



HOW GREEN IS THE CANOPY?

You can follow the progress of our program and see where the canopy is being restored at mwrdd.org. We've created a GIS map of all the trees we've distributed using their location information provided by recipients.



SPREAD THE WORD

Post a selfie with your tree on Facebook or Twitter and tag us @mwrddgc with #MyMWRDTree. You can also email pictures to public.affairs@mwrdd.org.



#myMWRDTree

